

Review Article

PHARMACOGNOSTIC, ETHNOPHARMACOLOGICAL, PHYTOCHEMICAL AND PHARMACOLOGICAL PROFILE OF WILD GUAVA I.E. *CAREYA ARBOREA* ROXB

MANBIR KAUR^{*1, 2}, RAKESH YADAV¹

¹Department of Pharmaceutical Sciences, Banasthali Vidyapeeth, Banasthali, Rajasthan, ²Khalsa college of Pharmacy, G. T. Road, Amritsar, Punjab, India

Email: manbirmanu@yahoo.com

Received: 27 Dec 2016, Revised and Accepted: 20 Mar 2017

ABSTRACT

Careyaarborea Roxb. is a medium-sized deciduous tree of 9 to 18 m height, surviving throughout India up to an altitude of 1,500 meters and other Asian countries. The tree belongs to

Family Lecythidaceae and has folklore use in treating cold, cough, tumours, asthma, inflammations, ulcers and skin infections. The present review reveals updated, comprehensive and categorized information on pharmacognostical evaluation containing morphology as well as microscopic studies, ethnopharmacology, physicochemical parameters, preliminary photochemical screening, phytochemistry and elaborated pharmacological studies.

Keywords: *Careyaarborea*, Slow match tree, Lecythidaceae, Microscopy, Biological activity

© 2017 The Authors. Published by Innovare Academic Sciences Pvt Ltd. This is an open access article under the CC BY license (<http://creativecommons.org/licenses/by/4.0/>)
DOI: <http://dx.doi.org/10.22159/ijcpr.2017v9i3.18887>

INTRODUCTION

Nature has been a source of therapeutic agents for thousands of years and a tremendous number of novel drugs have been discovered from natural sources. India is known as "Botanical Garden of the world" as it has a huge diversity of medicinal plants. Moreover, Medicinal plants have played important role in the development of material medica.

In 1819 a genus of flowering plants in the family Lecythidaceae was described as *Careya* [1]. Lecythidaceae is included in the order Ericales, is considered monophyletic [2]. The word Lecythidaceae means large woody trees bearing large fruits with woody skins. The family comprises of tropical trees consisting of about 20 genera and 450 species [2, 3].

The genus *Careya* includes three different species which includes *Careyasphaerica* Roxb, *Careya herbacea* Roxb and *Careya arborea* Roxb. *Careya arborea* is a deciduous tree about 20 m high and is known as 'Padmaka' in Ayurveda [4]. The accepted botanical name is *kumbi* [5] and "Wild guava" in English [6].

The leaves are simple, broadly obovate in shape, acuminate apex with crenate, dentate margin, petioles (0.1–1.8 cm) long. Flower yellowish white, ill-smelling, sessile; fruits large, round, green and fleshy; seed embedded in the fleshy pulp of the fruit. Bark dark grey exfoliating in thin strips.

Taxonomic hierarchy

Kingdom: Plantae

Division: Angiosperms

Class: Eudicots

Subclass: Asterids

Order: Ericales

Family: Lecythidaceae

Genus: *Careya*

Species: *Arborea*

Synonyms [7]

Sanskrit: Svadupuapa, Vitapi, Sthalakumbhi, Romasa

Bengali: Kumbhi

Hindi: Sthalakumbhi

Kannada: Daddala, Gudda, Daddippe

Malayalam: Pezuntol

Marathi: Kumbhaa

Tamil: Kumbi

Telugu: Dudippi

English name: Slow match tree

Morphological features of *Careyaarborea*

1. Medium sized deciduous tree with height about 20 m.
2. The surface of bark is fissured and dark grey in colour.
3. Leaves are simple, broadly obovate, tapering towards base, stipulated and the margin is crenate, shortly petiolated, glabrous.
4. The inflorescence is terminal and raceme.
5. Flowers bisexual, yellowish green with red-purple stamens; calyx and petals are free and 4-4 in number, inferior ovary, multilocular with many ovules arranged in 2 rows, style 1.
6. Fruit is drupe, many-seeded, globose to depressed globose, crowned by sepals. Fruit skin is leathery, pulp fleshy, not splitting.
7. Seeds exalbuminous, dark brown in colour, oval, ellipsoid, 1.5 to 2 cm long, indehiscent; testa hard and wrinkled.

Leaf microscopy [8]

8. Transverse section of the leaf through midrib region shows slight upper epidermis and large epidermis at the lower surface (fig. 2). Epidermal cells are thin walled and rectangular in shape, covered with thick cuticle followed by collenchymatous ground tissue.

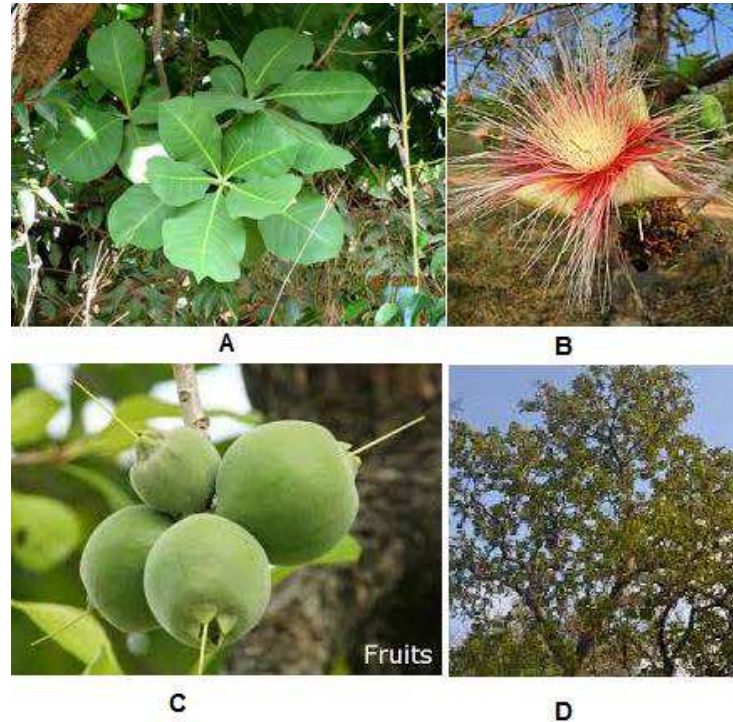


Fig. 1: A. Leaves of *Careyaarborea*, B. Flower of *Careyaarborea*, C. Fruits of *Careya arborea*, D. *Careyaarborea* tree

Palisade cell is single layered; midrib region shows one median large size vascular bundle and two lateral vascular bundles. Sclerenchyma is present at the upper notched side above the median vascular bundle. Xylem is arranged in cup-shaped and surrounded by phloem facing toward the lower side. Xylem consists of vessels, tracheids, fibres and xylem parenchyma. The lateral vascular bundle also shows sclerenchymatous bundle

sheath which encircles the vascular bundle. Sclerenchymatous bundle sheath is broad on both surfaces and only 1 or 2 layered on the lateral side. TS passing through lamina region showed single layered palisade cells followed by several layers of spongy mesophyll embedded with lateral vascular bundles. *C. arborea* leaf surface shows the anisocytic stomata which is characteristic of Family Lectyidaceae.

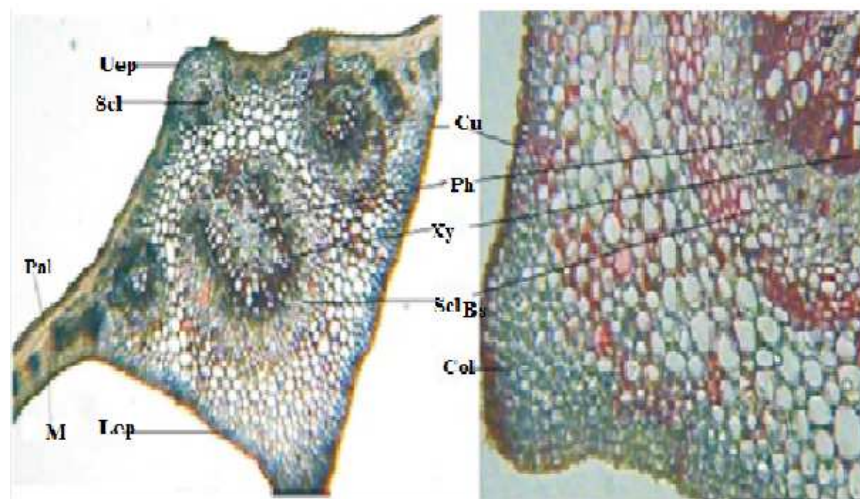


Fig. 2: T. S. of *C. arborea* leaf. Uep upper epidermis, Lep lower epidermis, Cu cuticle, Pal, Palisade, Scl: sclerenchyma, Col: collenchyma, M: mesophyll, X: xylem, P: Phloem, SclBS; Sclerenchyma Bundle sheath

Stem microscopy [8]

The stem of *Careyaarborea* under a microscope shows outer cork (3 to 4 layered); cork cambium (1 to 2 layered) followed by collenchymatous cortex with embedded vascular bundles (fig. 3). Cortical vascular bundles of various shape and size are present and surrounded by sclerenchymatous bundle sheath. Pericycle is

present. Phloem, consisting of phloem fibers, sieve tubes, companion cells and phloem parenchyma followed by vascular cambium 4 to 5 layered and 4 to 5 cells broad in continuous layers. Xylem consists of vessels, tracheids, fibres and xylem parenchyma; medullary rays 1 to 2 cells broad and radiating; vessels are mostly solitary towards the centre and in a group of 2 to 4 towards the periphery. The Central portion is occupied by collenchymatous pith.

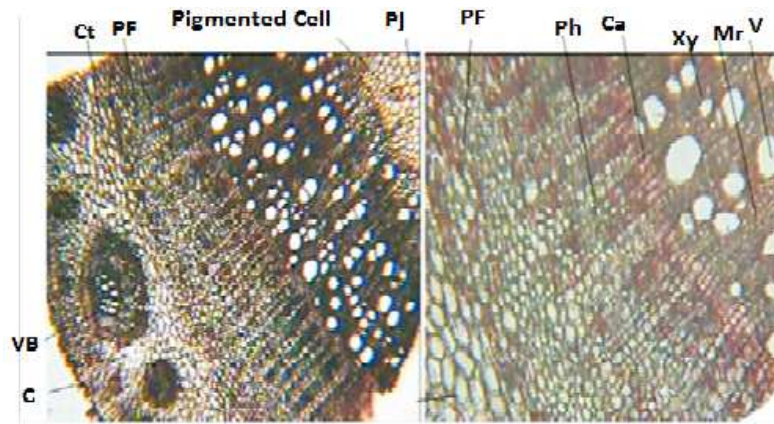


Fig. 3: T. S. of *C. arborea* stem. C: cork; Ct: cortex; VB: Vascular Bundle; Xy: Xylem; PF: Pericyclic Fibre; Ph: Phloem; Ca: Cambium; Mr: Medullary rays; V: Vessels; P: Pith

Stem bark microscopy [9, 10]

Transverse section of bark has been reported to have prominent cork, cortex and secondary phloem. The cork cells consist of 8–16 layered, thick wall, rectangular and blackish brown in colour. Beneath the cork, there are 2-3 layers of phelloderm and then the

phelloderm. The cortex consists of rectangular to polygonal cells of parenchyma. The secondary phloem is made up of fibres, phloem parenchyma, medullary rays (1-2 seriate) and vessels. Calcium oxalate crystals are present in cells of cortex and phloem parenchyma in secondary phloem. Few starch grains are also found to be present.

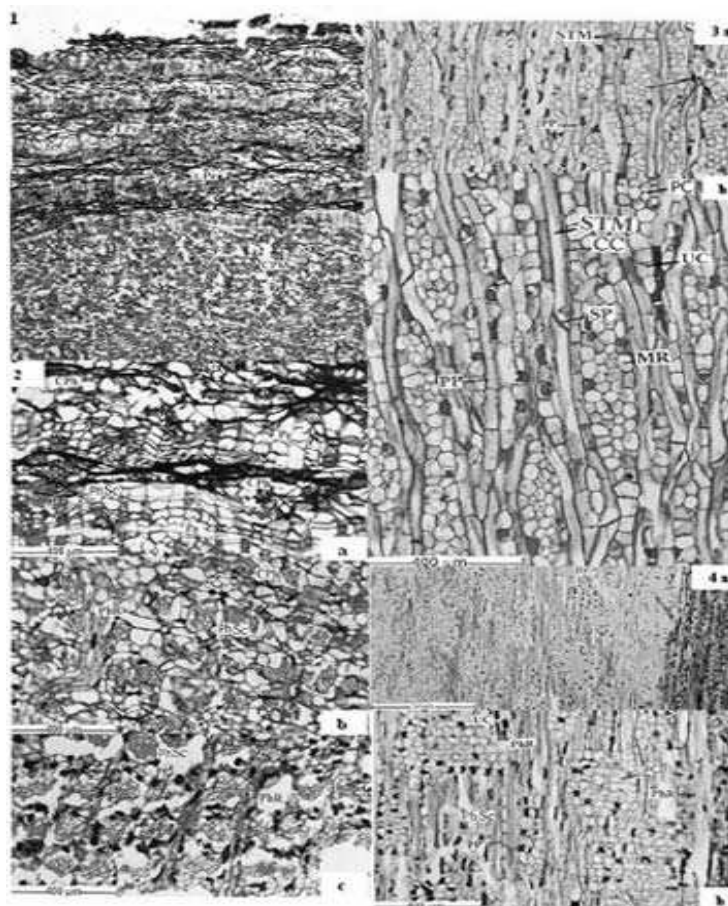


Fig. 4.1. T. S. of bark: (Cph-collapsed phloem; Fpe-First formed periderm; Lpe-Last formed periderm; Spe-Second formed periderm; Tpe-Third formed periderm), fig. 4. 2. The structure of three zones of bark: a) Outer rhytidome b) Middle collapsed phloem zone c) Inner non-collapsed phloem zone (Cph-Collapsed phloem; Pe-Periderm; PhR-Phloem ray; phsc-Phloem sclereids), fig. 4.3. TLS view of phloem: a) Non-storied multiseriate wide rays b) Sieve tube members and sieve plate structure of phloem rays (Cc-Campanion cells; MR-Multiseriate ray; PC-procumbent cells; PhR-phloem ray; PP-Phloem parenchyma; Sp-Sieve plate; STMSieve tube member; UC-Upright cells), fig. 4.4. RLS of phloem: a) Phloem rays as seen under low magnification b) Same as above under high magnification (Pc-Procumbent cells; PhR-phloem ray; PP-Phloem parenchyma; Phsc-Phloem sclereids; UC-Upright cells)

Ethnopharmacological uses

The therapeutical importance of *Careyaarborea* is mentioned in Materia Medica, Ayurveda, Siddha and Unani system of medicines. The root paste is used in body ache. Moreover, it is taken in the morning in empty stomach against joint pain for five days. Root-bark decoction (with long pepper) is used in fever, Stem-bark powder (paste with honey) is given to children in cold and cough; Stem-bark (paste with margosa) heals leucoderma. The bark of the tree and the sepals of the flowers are used as astringent and mucilaginous being administered

internally in coughs and colds and applied externally as an embrocation. The stem bark of *C. arborea* is traditionally used in the treatment of tumours, bronchitis, skin disease, epileptic fits, astringent antidote to snake venom, abscesses, boil and ulcer [11]. Infusion of the flower is used after childbirth to heal rupture caused by childbirth.

Physicochemical parameters

Physicochemical parameters of the leaf and the stem bark are listed in table 1 [8, 12, 13,]

Table 1: Physicochemical parameters of leaf and stem of *C. arborea*

Physicochemical constants	Leaf	Stem bark
Foreign matter (% w/w)	0.20	0.80
Total ash (% w/w)	6.00	4.50
Acid insoluble ash (% w/w)	1.40	0.17
Water soluble ash (% w/w)	2.20	1.10
Loss on drying (% w/w)	3.20	6.00
Swelling index (mL)	4.70	3.73
Water soluble extractive (% w/w)	18.4	16.0
Alcohol soluble extractive (% w/w)	8.20	7.20

Phytochemical screening, table 2 [14] revealed the presence of alkaloids, flavonoids, phenols, tannins, sterols and fixed oils.

Table 2: Phytochemical screening

Reagents	Color/precipitate	Constituents
Mayer's reagent	No precipitate	Alkaloids absent
Dragendorff reagent	No precipitate	Alkaloids absent
5% Ferric chloride test	Greenish black precipitate	Phenols present
N P reagent	Yellow fluorescence	Flavonoids present
15% Ferric chloride test	Greenish black precipitate	Tannins present
Aq. Lead acetate	White precipitate	Tannins present
Lieberman Burchard's Test	Reddish brown colour	Sterols present
Spot test	Stains observed	Fixed oils present

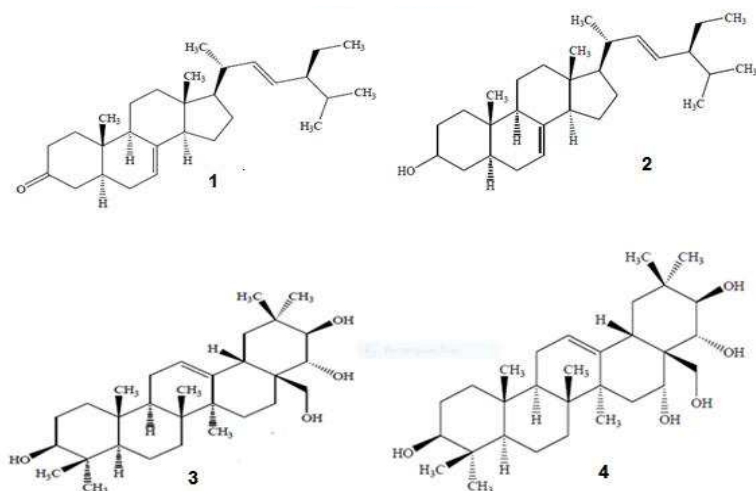
Phytochemistry

The plant has been extensively investigated and chemical constituents from the barks, leaves and seeds of the plant have

previously been reported to include triterpenoids [15], flavonoid [16], coumarin [17] saponins and tannins [18]. *Careyaarborea* also contains five Saponins (sapogenols-careyagenol A, B, C, D and E); sterols, α -spinosterol and α -spinosterone [7].

Table 3: Phytoconstituents present in different parts of *Careyaarborea*

Plant part	Phytoconstituents
ROOTS	Phyto-estrogens, Sito-sterol [19]
STEM BARK	lupeol, β -sitosterol, betulin, betulinic acid, 1-[5-(1,3-benzodioxol-5-yl)-1-oxo-2,4 pentadienyl] piperidine[20]
SEEDS	α -spinasterol, Δ 22-stigmastanol [21] Triterpenoids: Barringtogenol C
LEAVES	Careyagenolide, maslinic acid, 2 α hydroxyursolic acid [21] n-hexacosanol, α -spinasterol, taraxerol, taraxeryl acetate, β -sitosterol, ellagic acid and quercetin[16], Triterpene ester-careaborin[22], Tannins [23] valoneic acid dilactone[17]
FLOWERS	Steroids and triterpenoids, Phenols, Tannins [10]



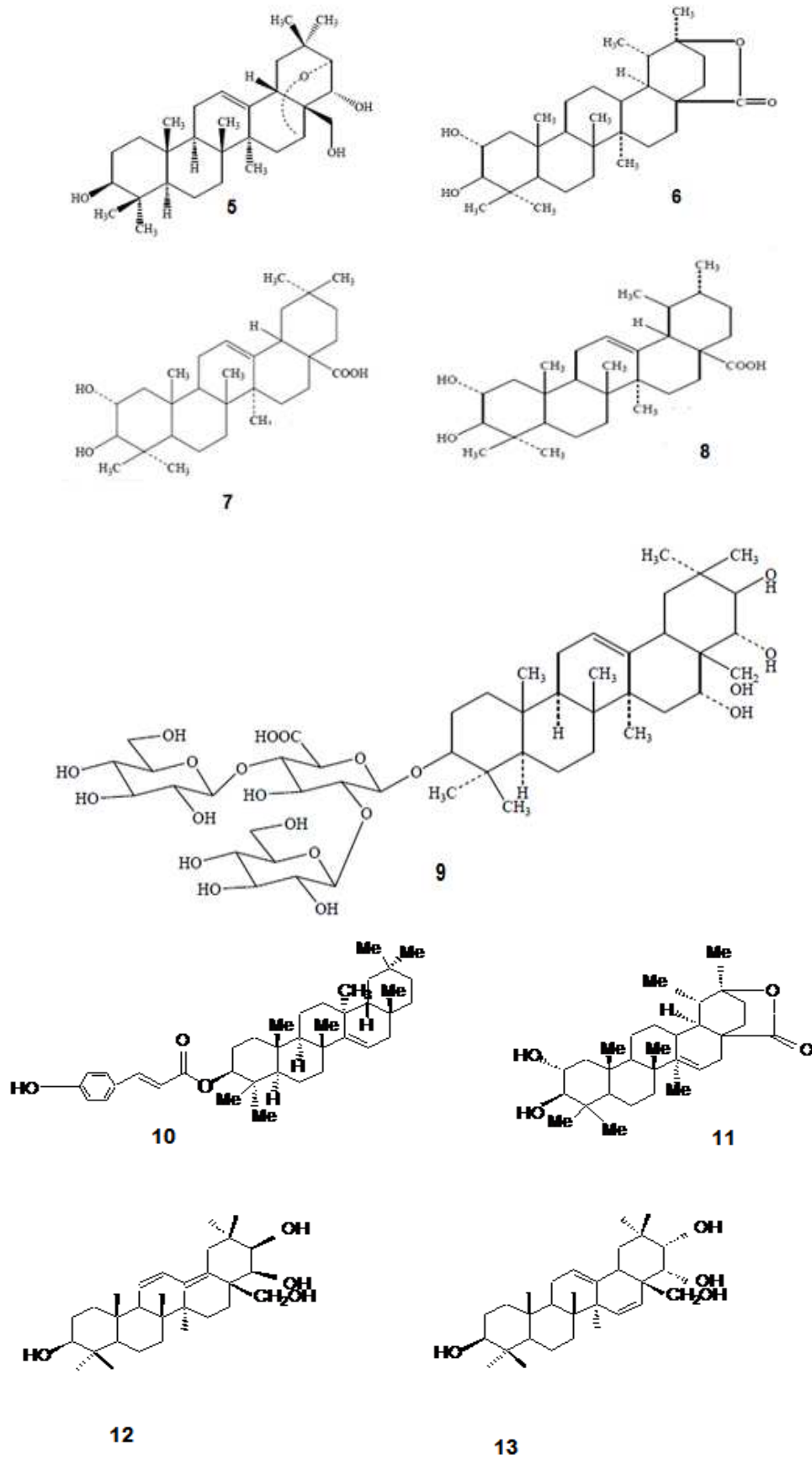


Fig. 5: Structures of some phytoconstituents present in *Careyaarborea*, 1. α -spinasterone [21], 2. α -spinasterol [21], 3. 16-desoxybarringtogenol C [24], 4. Barringtogenol C [25-27], 5. Barringtogenol D [25-27], 6. Triterpenoid lactone careyagenolide [15], 7. Maslinic acid [15] and, 8. 2 α -hydroxyursolic acid [15], 9. Desacylescinc III [28], 10. Careyaborin-I [20], 11. Careyagolide [20], 12. Careyagenol E [20], 13. Careyagenol D [20]

Pharmacological profile

Hepatoprotective and antioxidant activity

Sambathkumar *et al.*, (2005) [29] evaluated the hepatoprotective and antioxidant effect of methanolic extract of stem bark *Careyaarborea* Roxb in Wistar albino rats. The hepatotoxicity was induced by carbon tetrachloride (30% CCL₄, 1 ml/Kg body weight in liquid paraffin. Three doses 50,100 and 200 mg/kg (i. p.) at 72 h interval and Silymarin 25 mg/kg were administered to the CCL₄ treated rats. Analytical parameters like GOT, GPT, ALP, bilirubin, uric acid, and total protein were measured in the rat's induced hepatotoxicity by CCL₄. The effect of the extract on Lipid Peroxidation, enzymatic antioxidant's and Catalase, and nonenzymatic anti oxidents, vitamin.

C and vitamin E were estimated. The extract and silymarin produced significant ($p < 0.05$) hepatoprotective effect by decreasing the activity of serum enzymes bilirubin, uric acid and lipid peroxidation and significantly ($p < 0.05$) increased the level of SOD, CAT, GSH, vitamin C, vitamin E and protein in a dose-dependent manner. Thus, methanolic extract of stem bark *Careyaarborea* Roxb possesses potent hepatoprotective and antioxidant activity. Senthil kumar *et al.*, (2008) [30] studied the Antioxidant and hepatoprotective activity of the methanol extract of *Careyaarborea* bark in Ehrlich ascites carcinoma (EAC) bearing mice. Tumor control animals inoculated with EAC showed a significant alteration in the levels of antioxidant and hepatoprotective parameters. The extract treatment at 50, 100 and 200 mg/kg body weight doses given orally caused a significant reversal of these biochemical changes towards the normal in serum, liver and kidney when compared to tumor control animals indicating the potent antioxidant and hepatoprotective nature of the standardized extract.

Anticancer activity

Anticancer potentials of the methanol extract of *Careyaarborea* Roxb bark against Dalton's lymphoma ascites (DLA)-induced ascitic and solid tumors was studied by Natesan *et al.*, (2007) [31]. The methanol extract of its bark given orally to mice at the dose of 250 or 500 mg/kg body weight for 10 d caused a significant reduction in percent increase in body weight, packed cell volume, and viable tumor cell count when compared to the mice of the DLA control group. Restoration of haematological and biochemical parameters towards normal was also observed. Histological observations of liver and kidney also indicated repair of tissue damage caused by tumor inoculation. The extract at the dose of 5 or 25 mg/kg body weight given i. p. daily for 14 d significantly reduced the solid tumor volume induced by DLA cells. Kumar *et al.*, (2008) [32] studied the antimicrobial and antioxidant activities of methanol extract of *Careyaarborea* stem barks in various *in vitro* systems. Antimicrobial activities were carried out using disc diffusion methods with Gram positive and Gram negative strains of bacteria and some fungal species. The extract showed broad spectrum antimicrobial activity against all tested microorganisms. Antioxidant and free radical scavenging activities of methanol extract of *Careyaarborea* stem barks was assessed by using DPPH, superoxide anion radical, nitric oxide radical and hydroxyl radical scavenging assays. The result indicates that the methanol extract of *Careyaarborea* can use as antimicrobial and antioxidant agents.

Antifungal activity

Kumar R. S, 2006 [33] revealed the Antifungal activity of methanolic extract of the bark against *Candida albicans*, *Aspergillus flavus*, *Aspergillus niger* and *Alternariasolani* was revealed.

CNS depressant activity

Kumar *et al.*, (2008) [32] studied the methanol extract of barks of *Careyaarborea* to investigate central nervous system activity in Swiss albino mice and Wistar albino rats. General behaviour, exploratory behaviour, muscle relaxant activity and phenobarbitone sodium-induced sleeping time were studied. The results revealed that the methanol extract of barks of *Careyaarborea* at 100 and 200 mg/kg caused a significant reduction in the spontaneous activity (general behavioral profile), remarkable decrease in exploratory behavioral pattern (Y-maze and head dip test), a reduction in

muscle relaxant activity, and also significantly potentiated phenobarbitone sodium-induced sleeping time, the result showed significant CNS depressant activity in tested animal models.

Anti-ulcer activity

Kamal Kumar, *et al.* 2013, [34] studied that ethanol extract of the stem bark of *Careyaarborea* Roxb. have anti-ulcer effect by using Models such as ethanol-induced, cold stress induced and pyloric ligation Model. The studies were performed on Wister rats of either sex. The anti-ulcer effect was contrasted with standard drug (ranitidine 30 mg/kg) orally. The maxi mumulcer protection of ethanol extract of *Careyaarborea* has been shown in the Ethanol-induced and cold stress induced models and a significant effect was found at both 300 mg/kg and 600 mg/kg dose levels.

Anti-diarrhoeal activity

The methanol extract of the *Careyaarborea* Roxb. bark significantly reduced castor oil induced diarrhoea in mice. This effect supports the local traditional use of the plant against diarrhea and was proved by Rahman *et al.*, (2002) [35].

Anti-inflammatory and analgesic activity

The anti-inflammatory and analgesic effect of methanolic extract of *Careyaarborea* stem bark is carried out by Sambathkumar *et al.*, (2005) [29]. The effect on the acute and chronic phases of inflammation was studied in carrageenan, dextran and mediators (histamine and serotonin) induced paw edema and cotton pellet induced granuloma respectively. Analgesic effect was evaluated in acetic acid induced writhing and hot plate test.

The antiedema effect was compared with indomethacin 10 mg/kg orally. In the acute phase of inflammation a maximum inhibition of 50.56, 48.86, 47.12 and 48.23 % ($p < 0.05$) was noted at the dose rate of 200 mg/kg b.w. after 3 h of treatment with methanolic extract in carrageen, dextran, histamine and serotonin induced paw edema respectively. Administration of methanolic extract at the dose of 200 mg/kg and indomethacine (10 mg/kg) significantly ($p < 0.05$) decreased the formation of granuloma tissue induced by cotton pellet method at a rate of 53.91% and 57.60% respectively. The methanolic extract revealed significant ($p < 0.01$) analgesic activity in both models.

Antifertility activity

The methanolic root extract of *Careyaarborea* Roxb. Showed antifertility activity (pregnancy inhibition) in 3 mo old Swiss albino mice at the dose level 1000 mg/kg bw, when administered orally for a short period (14 d) by Jogen Chandra K *et al.*, (2011) [36]. Animals were treated with different doses of extract: 250 mg/kg bw, 500 mg/kg bw 750 mg/kg body weight and 1000 mg/kg body weight for a short period of 14 consecutive days. The extracts were administered orally at the 24h interval. The minimum effective dose of the root extract to prevent pregnancy was found to be 500 mg/kg. The dose of the extract that could induce strong pregnancy inhibitory activity was 1000 mg/kg bw. The root extract had a significant dose-dependent pregnancy inhibitory effect.

Anticoagulant activity

It was reported that the methanolic extract *Careyaarborea* (bark) possess anticoagulant activity *via* assay of activated partial thromboplastin time (aPTT), Prothrombin time (PT), and thrombin time (TT). It was shown that bark extract caused a significant increase ($p < 0.05$) in aPTT, PT and TT at all doses and results were almost equivalent to the response of warfarin [37].

Market formulations

Kumbhajatu Ayurveda Rasashala, treat hyperlipidemia [38].

Jigrine Hamdard Laboratories, treat liver problems [34, 40].

Habb-E-Kabid Naushadri Hamdard Laboratories treat liver disorders [41].

Hamdard Ghutti Hamdard Laboratories, a paediatric preparation used to treat constipation of newborn and infants [42].

Obenyl Tablet Charak Pharmaceuticals, to treat obesity [43].

CONCLUSION

This review concludes that *Careyaarborea* has emerged as a good source of the traditional medicine for tumours, bronchitis, skin disease, epileptic fits, astringent antidote to snake venom and ulcers. Many traditional uses have now been evaluated by modern pharmacology research. Intensive investigations related to bioactive constituents for specific pharmacological action, their mechanism of action, safety and efficacy could be the future research interests to explore the plant exhaustively.

CONFLICT OF INTERESTS

Declare none

REFERENCES

- Roxburgh, William. Plants of the Coast of Coromandel 3:13 and Tropicos, *Careya* Roxb; 1819.
- Anderberg AA, Rydin C, Källersjö M. Phylogenetic relationships in the order Ericales: analyses of molecular data from five genes from the plastid and mitochondrial genomes. *Am J Botany* 2002;89:677-87.
- Mori SA, Tsou CH, Wu CC, Cronholm B, Anderberg AA. Evolution of Lecythidaceae with an emphasis on the circumscription of neotropical genera: Information from combined *ndhF* and *trnL-F* sequence data. *Am J Botany* 2007;94:289-301.
- Anonymous: ayurvedic formulary of India, part 1. first ed. Govt. of India, New Delhi; 1978. p. 6.
- Yoganarsimha SN. Medicinal plant of India, Cyber media, Tamil Nadu, Bangalore, II; 2000. p. 263.
- Gurudeva MR, Divya CP. Botanical and Vernacular names of south Indian plants, Bangalore; 2001. p. 92.
- The Ayurvedic Pharmacopoeia of India. Part-I. Vol. V; 2008. p. 1-199.
- Gupta PC, Sharma N, Rao CV. Pharmacognostic studies of the leaves and stem of *Careyaarborea* Roxb. *Asian Pac J Trop Biomed* 2012;2:404-8.
- Wadkar KA, Chandrakant MS. Pharmacognostic profiles of the bark of *Careyaarborea* Roxb. *J Pharmacogn Phytother* 2009;1:64-6.
- Shanth TR, Pasupathy S, Yoganarasimhan SN. Identification, macro, microscopic and physicochemical details of a market sample of padmaka (*Careyaarborea*Roxb). *Indian J For* 1987;10:131-9.
- Nadkararni KM. Medicinal plants of India. Reprint Prakashan, Dehradun; 2004. p. 87.
- Goyal KK, Kumar BNS, Mruthunjaya K, Yoganarasimhan SN. Pharmacognostic studies of stem bark of *Careyaarborea*Roxb. *Int J Green Pharm* 2011;5:6.
- Soni P, Sharma H, Bisen S. Physicochemical properties of *Careyaarborea* and *Aesculus assamica* starches. *Biosynthesis Nutr Biomed* 1989;41:208-11.
- Ragavendran P, Radha A, Mariya Paul, Suresh Kumar D. A pharmacognostical report on *Careyaarborearoxb*. (Lecythidaceae) fruits. *Hygeia J D Med* 2015;7:139.
- Das MC, Mahato SB. Triterpenoidsapogenols from the leaves of the *Careyaarborea* structure of careyagenolide. *Phytochemistry* 1982;21:2069-73.
- Gupta RK, Chakraborty NK, Dutta TR. Crystalline constituents from *Careyaarborea* Roxb. *Indian J Pharm* 1975;376:161-2.
- Basak A, Banerjee BL, Basu K. Chemical examination of the leaves of *Careyaarborea*. *J Indian Chem Soc* 1976;53:639-40.
- Kulakkattolickal A. Piscicidal plants of Nepal, Preliminary toxicity screening using grass carp (*Ctenopharyngodonidella*) fingerlings. *J Ethnopharmacol* 1987;21:1-9.
- Haloi K, Kalita E, Kalit JC. Effects of methanolic root extract of *Careyaarborea*Roxb on ovarian histology of albino mice. *NEBIO* 2010;1:14-7.
- Yoganarasimhan SN. Medicinal plants of India (Karnataka). Interline Publishing Pvt Ltd, Bangalore, I; 1996. p. 95.
- Mahato SB, Dutta NL. Phytochemistry: sterols from *Careyaarborea*Roxb. *IJRAP* 1972;11:2116-7.
- Talapatra B, Basak BA, Talapatra SK. Terpenoids and related compounds Part XX. Careaborin, a new triterpene ester from the leaves of *Careyaarborea*Roxb. *J Indian Chem Soc* 1981;58:814-5.
- Gupta R. Tannin bearing plants of India from denuded wastelands. *J Economic Taxonomic Botany* 1981;2:139-55.
- ChakrabortiS, Barua A. Triterpenoids—XVI: The constitution of barringtogenol D—A new triterpenoid sapogenin from *Barringtoniaacutangulagaertn*. *Tetrahedron* 1963;19:1727-32.
- Nakano T, Hasegawa M, Fukumaru T, Durham LJ, Budzikiewicz H, Djerassi C. Structure of jegosapogenol (barringtogenol. C, aescinidin) and the configuration at C-21and C-22 in barringtogenol D, aescigenin, protoaescigenin, and isoescigenin. *J Org Chem* 1969;34:3135-46.
- Yosioka I, Imai K, Kitagawa I. On genuine sapogenins of horse chestnut saponins by means of soil bacterial hydrolysis and a new minor sapogenin: Desoxybarringtogenol C. *Tetrahedron Lett* 1967;8:2577-80.
- Mandal D, Panda N, Kumar S, Banerjee S, Mandal N, Sahu NP. A Triterpenoid saponin possessing antileishmanial activity from the leaves of *Careyaarborea*, *Phytochemistry* 2006;67:183-90.
- Mahato S, Banerjee S, Chakravarti R. Taraxerol from *Careyaarborea*. *Bull Calcutta School Trop Med* 1967;15:8.
- Sambath Kumar R, Sivakumar T, Sivakumar P, Nethaji R, Vijayabaskar M, Perumal P, et al. Hepatoprotective and in vivo antioxidant effects of *Careya arborea* against carbon tetrachloride-induced liver damage in rats. *Int J Mol Med Adv Sci* 2005;1:418-24.
- Senthilkumar N, Badami S, Cherian MM, Hariharapura RC. Potent *in vitro* cytotoxic and antioxidant activity of *Careyaarborea* bark extracts. *Phytother Res* 2007;21:492-5.
- Natesan S, Badami S, Dongre SH, Godavarthi A. Antitumor activity and antioxidant status of the methanol extract of *Careyaarborea* bark against Dalton's lymphoma ascites induced ascitic and solid tumor in mice. *J Pharmacol Sci* 2007;103:12-23.
- Kumar SR, Sivakumar P, Nethaji R, Senthil V, Murthy NV. CNS activity of the methanol extracts of *Careyaarboreain* experimental animal model, Bangladesh. *J Pharmacol* 2008;3:36-43.
- Kumar RS, Sivakumar T, Sundaram RS, Sivakumar P, Nethaji R, Gupta M. Antimicrobial and antioxidant activities of *Careyaarborea* Roxb. stem bark. *Iranian J Pharmacol Ther* 2006;5:35-41.
- Kumar. Anti-ulcer activity of ethanol extract of the stem bark of *Careyaarborea* Roxb. *Int Curr Pharm J* 2013;2:78-82.
- Rahman MT, Khan OF, Saha SA, Alimuzzaman M. Antidiarrhoeal activity of the bark extract of *Careyaarborea*Roxb. *Fitoterapia* 2003;74:116-8.
- Jogenchandra K, Ansarul H, Evarani K, Ronim SM, Mukhlesur R. Antifertility effects of the methanolic root extract of *Careyaarborearoxb* in albino mice. *The bios can* 2011;6:701-6.
- Karunakar N, Pillai K. Investigations of anti-inflammatory activity of jigrine. *Indian J Physiol Pharmacol* 1997;41:134-8.
- Ghosh R, Kadam PP, Kadam VJ. Antioxidant and hypolipidemic activity of Kumbhajatru in hypercholesterolemic rats. *Int J Ayurveda Res* 2010;1:159-62.
- Ahmad A, Pillai KK, Najmi AK, Ahmad SJ, Pal SN, Balani DK. Evaluation of the hepatoprotective potential of jigrine post-treatment against thioacetamide-induced hepatic damage. *J Ethnopharmacol* 2002;79:35-41.
- Najmi AK, Pillai K, Pal S, Aqil M. Free radical scavenging and hepatoprotective activity of jigrine against galactosamine induced hepatopathy in rats. *J Ethnopharmacol* 2005;97:521-5.
- Good Hakeem: a family herbal store. Available from: <http://buyherbalgoodhakeemcom/habb-e-kabinaushadri-hamdar>. [Last accessed on 25 Nov 2016]
- Jelliffe DB, Jelliffe E, Naylor A. Breastfeeding for child survival Pakistan. A report prepared by British consultants; 1988.
- Ayurveda for all: One-stop-shop for complete Ayurveda. Available from:<http://www.wayurvedaforall.com/index.php?osCsid=mc4ba3id0jv9cclsq47mjhip4.PsWd;diamond204>. [Last accessed on 25 Nov 2016].

How to cite this article

- Manbir Kaur, Rakesh Yadav. Pharmacognostic, ethnopharmacological, phytochemical and pharmacological profile of wild guava I.E. *Careya arborearoxb*. *Int J Curr Pharm Res* 2017;9(3):1-7.